



Est. 1933

Illinois Women's Golf Association

Founded in 1933, the IWGA is an all-volunteer organization devoted to advancing golf opportunities for the women and girls of Illinois by conducting state championship tournaments and through fundraising to support charitable contributions to individuals and organizations that embody the spirit of amateur golf.

2016 EVENTS



Mother Nature

Planet Earth
2015 IWGA State
Amateur Champion
(1st Rain-Out in 82 Years)



Roshannah Gaur

Hinsdale
2015 IWGA State
Junior Amateur Champion



Jan Bowers

Lincoln
2015 IWGA State
Senior Amateur Champion

The Illinois Women's Golf Association invites you to join amateur golfers throughout Illinois in these three outstanding championships.

83rd Annual IWGA State Amateur Championship

JUNE 14 - 17

- Location: Forest Hills CC, Rockford, IL
- Special Requirements: Resident of Illinois, club or individual member of IWGA
- Age Limit: None
- Handicap Index Limit: 22
- Format: 18-hole stroke play qualifying round followed by match play in flights
- Entry Fee: \$175.00
- Application Deadline: 06/06/16 or until qualifying field of 100 is full
- Tournament Chair: Pat Burgy, 815-298-7628 or state_am@iwga.org

37th Annual IWGA State Junior Amateur Championship

AUGUST 2 - 3

- Location: University of Illinois Golf Course, Savoy, IL
- Special Requirements: Resident of Illinois
- Age Limit: 18, or through summer after senior year of High School
- Handicap Limit: 40, or average score of 120 strokes or less
- Format: 36 holes of stroke play
- Entry Fee: \$100.00
- Application Deadline: 07/20/16 or until full field or pairings have been set
- Tournament Chair: Jan Fuller, 847-394-5014 or junior_am@iwga.org



47th Annual IWGA State Senior Amateur Championship

SEPTEMBER 13 - 15

- Location: Champaign CC, Champaign, IL
- Special Requirements: Resident of Illinois, club or individual member of IWGA
- Age Limit: Minimum age 50
- Handicap Limit: 30
- Format: 54 holes stroke play
- Entry Fee: \$225.00 (Includes tournament round cart fees)
- Application Deadline: 08/15/16 or until full field or pairings have been set
- Tournament Chair: Jane Piper 217-778-3389 or senior_am@iwga.org

Additional information and on-line registration available at
iwga.org

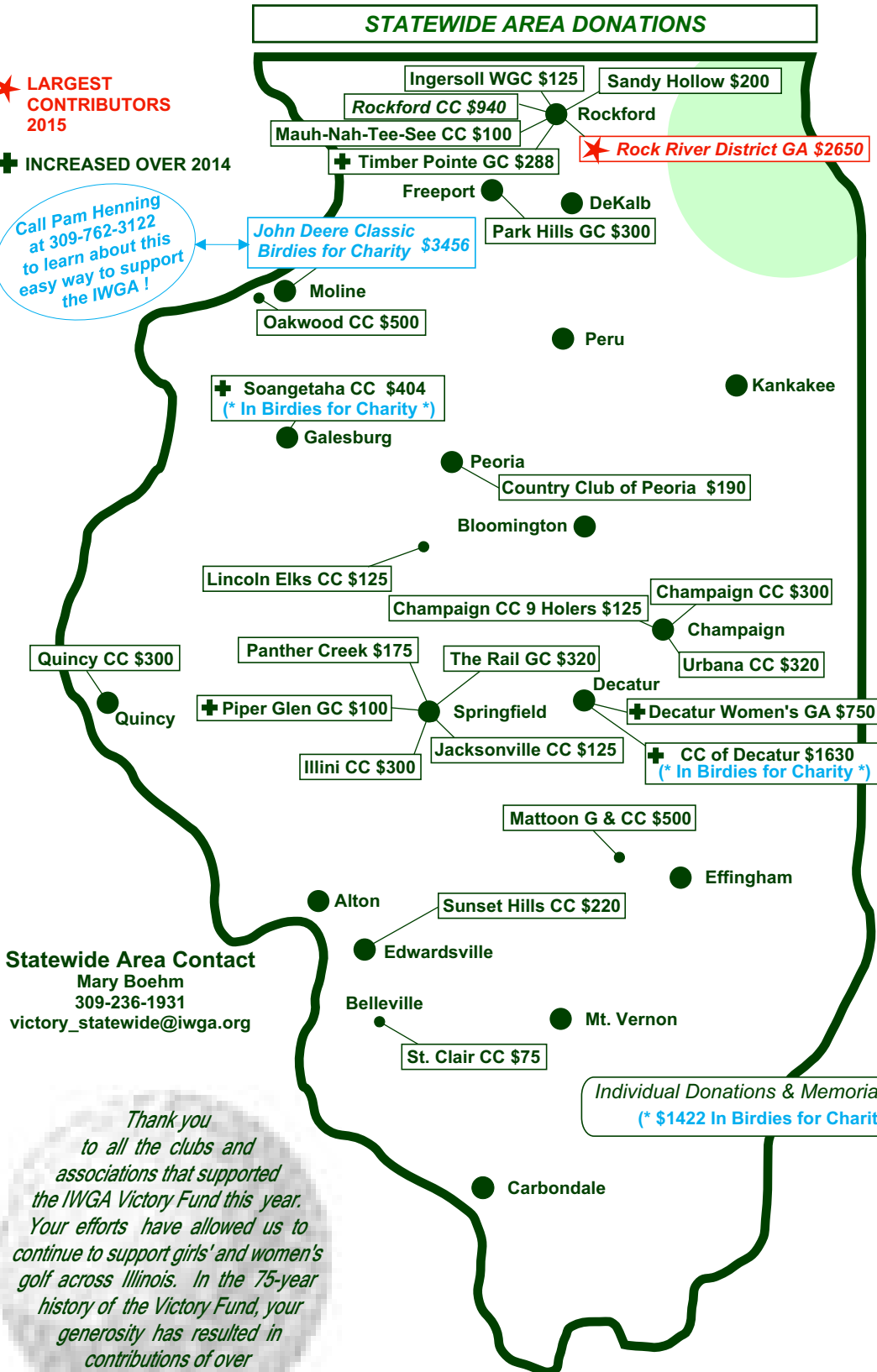
2015 IWGA Victory Fund Donations

STATEWIDE AREA DONATIONS

★ LARGEST CONTRIBUTORS 2015

⊕ INCREASED OVER 2014

Call Pam Henning at 309-762-3122 to learn about this easy way to support the IWGA!



CHICAGO AREA DONATIONS

Barrington Hills CC	\$200
Beverly CC	\$280
Big Foot CC	\$200
⊕ Briarwood CC	\$200
Buffalo Grove GC	\$620
⊕ Butterfield CC	\$350
Cook County WGC	\$75
Crystal Lake CC	\$150
Deerfield GC	\$273
Exmoor CC	\$200
Glen Oak CC	\$200
Glencoe GC	\$125
Inverness CC	\$200
★ Kishwaukee CC	\$2235
LaGrange CC	\$325
Lake Bluff GC	\$200
⊕ Lake Shore CC	\$150
⊕ McHenry CC	\$1000
Medinah CC	\$2055
⊕ North Shore CC	\$323
⊕ Oak Park CC	\$1500
Riverside GC	\$100
Rolling Green CC	\$270
⊕ Ruth Lake CC	\$600
Skokie CC	\$200
⊕ St. Charles CC	\$825
⊕ Twin Orchard CC	\$190
⊕ Wilmette GC	\$2092

Statewide Area Contact
Mary Boehm
309-236-1931
victory_statewide@iwga.org

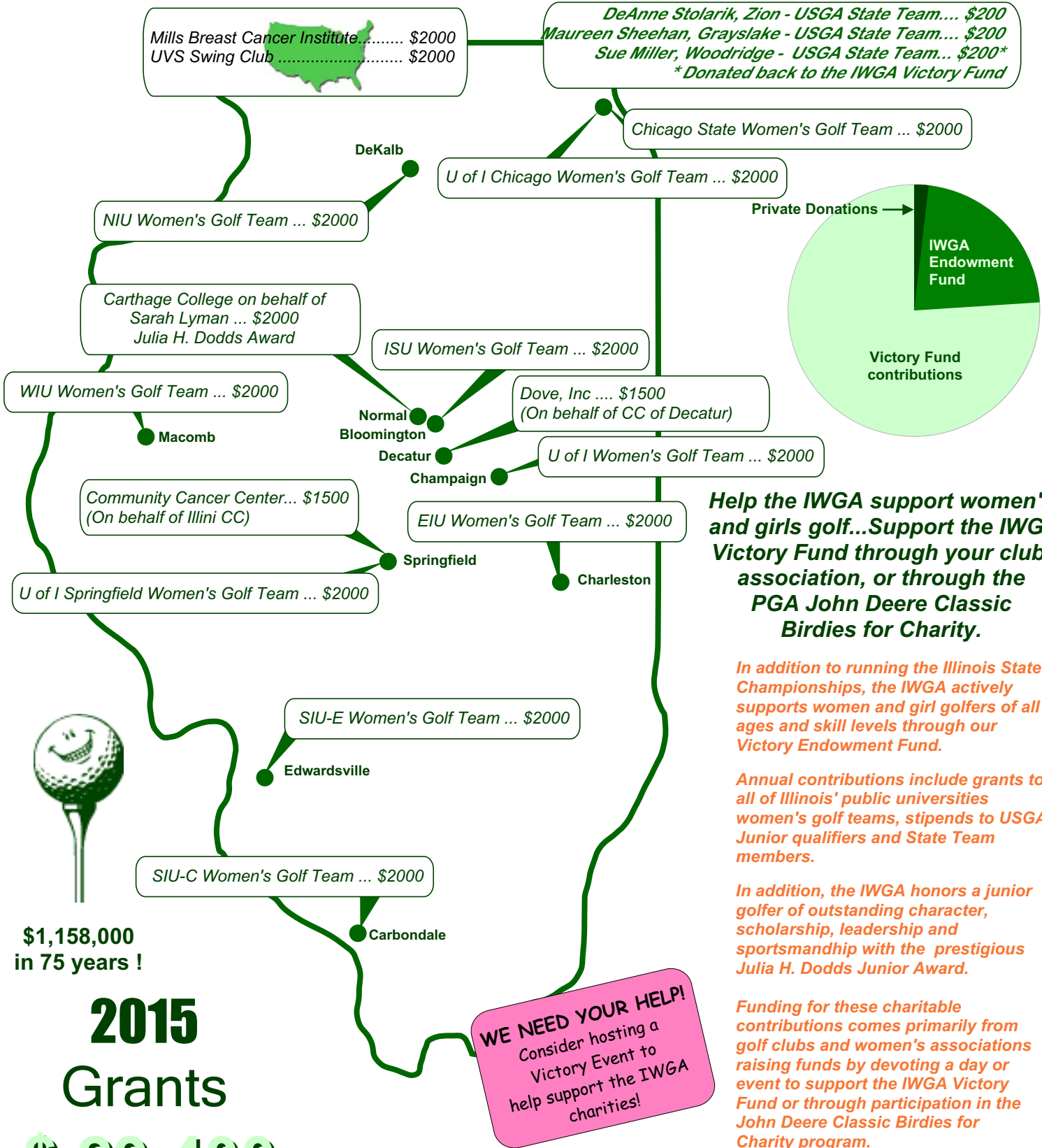
Chicago Area Contact
Ruth Femali
630-351-9263
victory_chicago@iwga.org

Individual Donations & Memorials \$3392
(* \$1422 In Birdies for Charity *)

Thank you to all the clubs and associations that supported the IWGA Victory Fund this year. Your efforts have allowed us to continue to support girls' and women's golf across Illinois. In the 75-year history of the Victory Fund, your generosity has resulted in contributions of over **\$1,158,000!**

2015
Donations
\$29,592

2015 IWGA Victory Fund Recipients



Help the IWGA support women's and girls golf...Support the IWGA Victory Fund through your club, association, or through the PGA John Deere Classic Birdies for Charity.

In addition to running the Illinois State Championships, the IWGA actively supports women and girl golfers of all ages and skill levels through our Victory Endowment Fund.

Annual contributions include grants to all of Illinois' public universities women's golf teams, stipends to USGA Junior qualifiers and State Team members.

In addition, the IWGA honors a junior golfer of outstanding character, scholarship, leadership and sportsmanship with the prestigious Julia H. Dodds Junior Award.

Funding for these charitable contributions comes primarily from golf clubs and women's associations raising funds by devoting a day or event to support the IWGA Victory Fund or through participation in the John Deere Classic Birdies for Charity program.

\$1,158,000 in 75 years !

2015 Grants \$ 29,400



The Illinois Women's Golf Association

www.iwga.org

Founded in 1933, the IWGA is an all-volunteer organization devoted to advancing golf opportunities for the women and girls of Illinois by conducting state championship tournaments and through fundraising to support charitable contributions to individuals and organizations that embody the spirit of amateur golf.

BOARD OF DIRECTORS

Mary Wheeler, Founder 1933

OFFICERS

President
Pam Henning
Moline

Secretary
Pat Burgy
Rockford

Treasurer
Terri Moore
Galesburg

ADVISORY BOARD

Barb Haberer
Mattoon

Pam Keeling
Rockford

Char McLearn
McHenry

COMMITTEE CHAIRPERSONS

Victory Fund
Ruth Femali
Bloomington

Mary Boehm
LeClaire, IA

Public Relations
Dorothy Powell
Rockford

Membership
Janice Kimpel
Urbana

RULES

Carla Sloan, Chair
Decatur

Jan Fuller
Prospect Heights

Janice Kimpel
Urbana

Char McLearn
McHenry

DIRECTORS

Monica Coleman
Long Grove

Leslie Frankfort
Rockford

Gail Hannam
Galesburg

Marlene Miller
Lake Bluff

Jane Piper
Champaign

Sandy Rice
Hampton

Mary Robson
Galesburg

HONORARY

Gene Besse, Sterling

EMERITUS

Barb Admire, Alton
Joann Anderson, Champaign
Ellen Boeye, Moline
Sue Boeye, Naples, FL
Shirley Dommers, Rockford
Lynne Frary, Rockford
Carol Fruit, Edwardsville
Bev Henderson, Peoria
Sue Hepler, Edwardsville
Judy Mott, Rockford
Nancy Switzer, Tucson, AZ
Karun Tillet, Springfield
Sue Young, Champaign
Suzanne Younger, Champaign

BECOME A MEMBER OF THE IWGA

Our three championships are open to Illinois residents who are individual members of the IWGA or belong to a club that is a member of the IWGA. Memberships and donations can be processed on-line through iwga.org or through US mail to our Membership Chair. If you wish to correspond by US mail, please use the area below.

MAIL TO:
Membership Chair: Janice Kimpel
109 G H Baker Dr.
Urbana, IL 61801
217-367-9891
e-mail: membership@iwga.org

- Please contact me for information on sponsoring a Victory Event at my club.
- Please accept our club as a 2016 member of the IWGA; our check for \$40 is enclosed.
- I would like to become an individual member of the IWGA for 2016; my check for \$15 is enclosed.
- I would like to make a direct contribution to the IWGA's Victory Endowment Fund in the amount of _____. My check is enclosed.
- Please contact me with information on recommending a candidate for the 2016 Julia Dodds Junior Award.

Name: _____

Club: _____

Address: _____

Address: _____

Phone: _____ e-Mail: _____

Phone: _____ Pro: _____

The Internal Revenue Service has granted the Illinois Women's Golf Association a 501 (C) (3) tax exempt status. Anyone wishing to make a donation to the IWGA may claim this as a charitable donation.

83rd ILLINOIS WOMEN'S AMATEUR GOLF CHAMPIONSHIP

Forest Hills C.C. • Rockford, Illinois

JUNE 14-17, 2016



Est. 1933

iwga.org

ELIGIBILITY FOR QUALIFYING

Entry to the qualifying round is open to women amateur golfers who maintain a residence in Illinois and have an 18-hole handicap index of 22 or less and whose club or association is a member of the IWGA. A player whose club is not a member of the IWGA may elect to become an individual member of the IWGA for a cost of \$15 (see iwga.org home page).

ENTRY DEADLINE

Players for the qualifying round will be comprised of the applicants with the lowest 100 handicaps received by June 6, 2016 or until the qualifying field of 100 players is full. Confirmation of receipt of entry and payment will be posted at iwga.org. In the event of a full field, a waiting list will be established and posted at iwga.org.

FORMAT

The match play field will be comprised of the lowest 80 players from Tuesday's 18 hole qualifying round. Players who finish higher than 80th will be eliminated from the tournament. Championship flight will be comprised of 32 players with remaining flights comprised of 8 players each. The defending champion is exempt from qualifying and will be seeded number one. The defending champion may elect to play the qualifying round to compete for Medalist honors. Her seeding will not be affected. Ties for 80th place and for the last place in Championship Flight will be determined by sudden-death playoff. All other ties for flight seeding will be determined by draw.

PRIZES

Prizes will be awarded to the winner and runner-up in all flights in addition to semi-finalists in Championship Flight. Qualifying round prizes will be awarded for Medalist and Jr. Medalist.

ENTRY FEE

The entry fee is \$175 and includes a practice round, tournament rounds, tournament round warm-up balls and a \$35 voucher to be used to purchase food and other items at the host club. Refunds for cancellations prior to June 6 will have a \$10 administrative fee deducted. No refunds will be given after June 6.

CONTESTANTS

A contestant may use a caddie, drive or have her caddie drive a motorized cart, or carry or pull her own clubs. Proper golf attire must be worn. Blue jeans, halter tops and tank tops are not permitted. Soft spikes only. Electronic devices that measure distance only will be allowed.

REGISTRATION

Registration will be available from 11am to 3pm on Monday, June 13. Players who do not register on Monday are requested to register at least one hour prior to their tee time on Tuesday.

PRACTICE ROUND

Practice rounds are available. Call (815) 877-4280 for reservations.

TEE TIMES

Tee Times for the qualifying round will be available at the clubhouse and on-line at iwga.org after 6pm on Sunday June 12.

QUESTIONS & WITHDRAWALS

Questions and withdrawals may be addressed to the Tournament Chairman: Pat Burgy at (815) 298-7628 or state_am@iwga.org.



2015 Champion
Mother Nature

(1st Rain-Out in 82 Years)

ENTRY FORM

2016 ILLINOIS WOMEN'S AMATEUR GOLF CHAMPIONSHIP
Forest Hills C.C., Rockford, IL

Mail Entry Fee of \$175.00 Payable To:
ILLINOIS WOMEN'S GOLF ASSOCIATION
Mary Robson, 225 Illini Drive, Galesburg, IL 61401
**** or register and pay on-line at iwga.org ****

I understand that USGA rules will govern play and that the IWGA will interpret and make all rules and entry decisions. Any decision of the IWGA shall be final.

Receive Texts ?

NAME: _____ PHONE: _____
(PLEASE PRINT) (CARRIER)

HOME ADDRESS: _____ CITY: _____ ZIP: _____

CLUB: _____ CITY: _____ STATE: _____

SCHOOL: _____ CITY: _____ STATE: _____

HANDICAP INDEX: _____ EMAIL ADDRESS: _____

Request a Cart for Player or Caddie (Contact club for Local Caddie and/or pull cart availability)

This form may be copied. Additional forms are available at iwga.org

AREA ACCOMMODATIONS

HOLIDAY INN EXPRESS LOVES PARK

7552 Park Pl.
Loves Park, IL 61111
(815) 654-4100

HILTON GARDEN INN

7675 Walton St.
Rockford, IL 61108
(815) 229-3322

CANDLEWOOD SUITES (IWGA Rate)

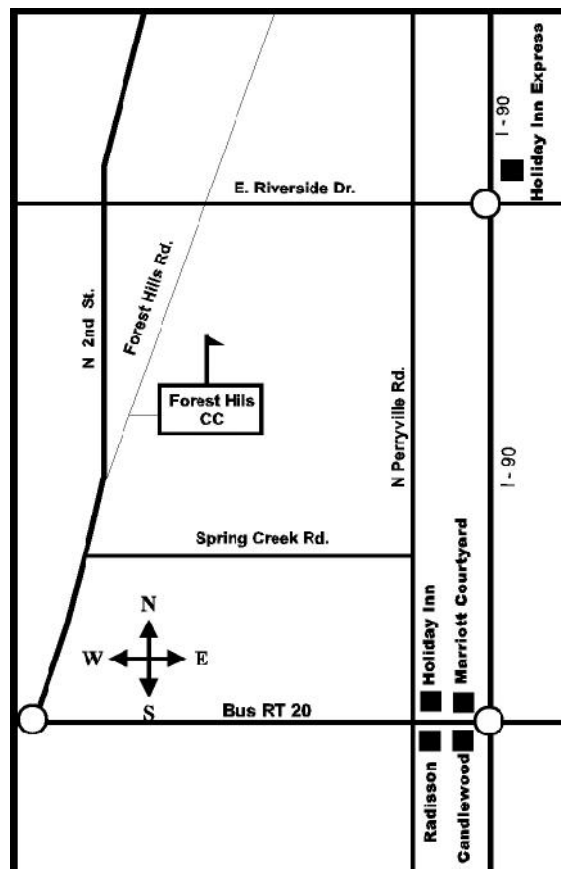
7555 Walton St.
Rockford, IL 61108
(815) 229-9300

RADISSON HOTEL (IWGA Rate)

200 S. Bell School Rd.
Rockford, IL 61108
(815) 226-2100

HOLIDAY INN ROCKFORD

7550 E. State St.
Rockford, IL 61108
(815) 398-2200



TOURNAMENT SCHEDULE

Mon.	June 13	Registration 11:00-3:00 Practice Rounds-Call Pro Shop to schedule at (815) 877-4280
Tue.	June 14	Qualifying Round
Wed.	June 15	1 st & 2 nd round match play - Champ. Flight 1 st round match play all other flights
Thu.	June 16	3 rd & 4 th round match play - Champ. Flight 2 nd round match play all other flights
Fri.	June 17	Final round match play - all flights Awards ceremony following play

FOREST HILLS COUNTRY CLUB

5135 Forest Hills Rd.
Rockford, IL 61114
(815) 877-4280
fhcc1921.com

Founded in 1933, the IWGA is an all-volunteer organization devoted to advancing golf opportunities for the women and girls of Illinois by conducting state championship tournaments and through fundraising to support charitable contributions to individuals and organizations that embody the spirit of amateur golf.

37TH ILLINOIS JUNIOR GIRLS' GOLF CHAMPIONSHIP

University of Illinois Golf Course • Orange Course • Savoy, Illinois

AUGUST 2-3, 2016



Est. 1933

iwga.org

ELIGIBILITY

Entry is open to Illinois residents with a handicap of 40 or less, or a scoring average of 120 or less, who have not reached their 19th birthday and have not yet begun college.

ENTRY DEADLINE

Entries will be accepted from the applicants with the lowest handicaps until July 20, 2016 or until the field of 84 players is full or pairings have been set. Confirmation of receipt of entry and payment will be posted at iwga.org. In the event of a full field, applicants will be notified if they have been placed on the waiting list.

FORMAT

The championship will be determined by 36 holes of stroke play. Players will be flighted by gross score following the first round of play. Champion will be determined by the low 2 day score regardless of flight. USGA rules will govern play and the IWGA Rules Committee will interpret and make all rules decisions. **Electronic devices that measure distance only will be permitted.**

PRIZES

Prizes will be awarded to the top four finishers in each flight. Ties for overall Champion will be determined by sudden-death playoff. All other ties will be determined by scorecard playoff. All prizes will be awarded following play. **The IWGA will not be responsible for sending prizes to contestants.**

ENTRY FEE

The Entry Fee is \$100 and includes the two tournament rounds and prizes. No refunds will be given after July 20.

CONTESTANTS

Proper golf attire must be worn. Blue jeans, halter tops and tank tops are not permitted. The use of caddies or automotive transportation is prohibited. A disabled contestant may petition the IWGA for an exception. Tournament check-in will be from 12:00 PM on Monday August 1 until 4:00 PM. Those unable to check-in on Monday must check-in 30 minutes prior to Tuesday's tee time,

PRACTICE ROUNDS

Practice rounds must be scheduled through the golf shop at (217) 359-5613. Contact the golf shop for times and greens fees.

TEE TIMES

First round tee times will be determined by handicap index and will be posted at the golf course and available at iwga.org on August 1. Second round tee times will be posted at the club and on the website following the close of first round play.

QUESTIONS & WITHDRAWALS

Questions and withdrawals may be addressed to the Tournament Chairmen: Jan Fuller (847) 394-5014 or Mary Boehm (309) 236-1931 or email to junior_am@iwga.org

JUNIOR RANKINGS

This tournament is included in both the AJGA Performance Based Entry (PBE) system and the Junior Golf Scoreboard ranking database. For more details, see ajga.org or juniorgolfscoreboard.com.



2015 Champion

Roshannah Gaur

Hinsdale



ENTRY FORM

2016 ILLINOIS JUNIOR GIRLS' GOLF CHAMPIONSHIP
University of Illinois Golf Course • Savoy, Illinois

Mail Entry Fee of \$100.00 Payable To:
ILLINOIS WOMEN'S GOLF ASSOCIATION
Mary Robson, 225 Illini Drive, Galesburg, IL 61401
**** or register and pay on-line at iwga.org ****

I understand that USGA rules will govern play and that the IWGA will interpret and make all rules and entry decisions. Any decision of the IWGA shall be final.

Receive Texts ?

NAME: _____ (PLEASE PRINT) PHONE: _____ (CARRIER)

HOME ADDRESS: _____ CITY: _____ ZIP: _____

HANDICAP INDEX (OR LAST FIVE 18-HOLE ROUNDS): _____ BIRTHDATE: _____

E-MAIL: _____ CONTESTANT PARENT / GUARDIAN

SCHOOL: _____ GRADUATION DATE: _____

SIGNATURES: _____ CONTESTANT GUARDIAN GUARDIAN DAYTIME PHONE

This form may be copied. Additional forms are available at iwga.org

AREA ACCOMMODATIONS

BEST WESTERN PARADISE INN

Rt. 45 South
Champaign, IL 61820
(217) 356-1824

DRURY INN & Suites

905 W. Anthony Dr.
Champaign, IL 61820
(217) 398-0030

HAWTHORN SUITES

101 Trade Center Drive
Champaign, IL 61820
(217) 398-3400

HILTON GARDEN INN

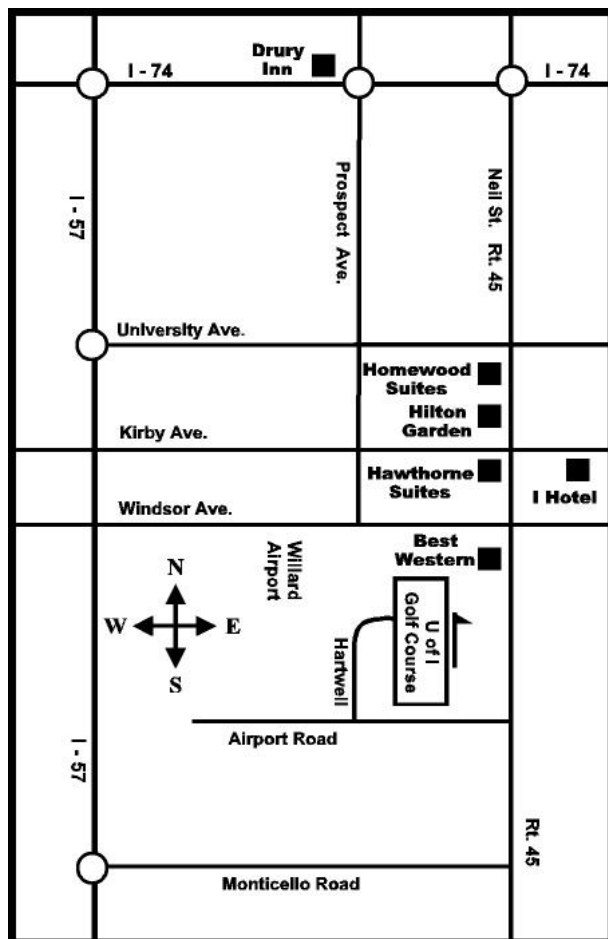
1501 S. Neil St.
Champaign, IL 61820
(217) 352-9970

HOMEWOOD SUITES

1417 S. Neil St.
Champaign, IL 61820
(217) 352-9970

I HOTEL

1900 S. First Street
Champaign, IL 61820
(217) 819-5000



TOURNAMENT SCHEDULE

Mon.	Aug 1	Tournament check-in 12:00-4:00
Tue.	Aug 2	First round play
Wed.	Aug 3	Final round play
		Awards ceremony following play

UNIVERSITY OF ILLINOIS G. C.

800 Hartwell Dr.
Savoy, IL 61874
(217) 359-5613
www.uofigolf.com

*** Julia H. Dodds Award ***

Each year, the IWGA recognizes an outstanding graduating high school senior with the Julia H. Dodds Award.

The \$2,000 award is directed to the winner's college to assist with her educational expenses.

Criteria for selection include: Character, Scholarship, Leadership and Sportsmanship.

For complete details, visit the IWGA website at iwga.org, or contact Janice Kimpel at dodds_award@iwga.org

IWGA Support for USGA Qualifiers

Each Illinois girl who qualifies for, and participates in, the USGA Junior Girls Championship will receive a small contribution from the IWGA to assist with her expenses.

Founded in 1933, the IWGA is an all-volunteer organization devoted to advancing golf opportunities for the women and girls of Illinois by conducting state championship tournaments and through fundraising to support charitable contributions to individuals and organizations that embody the spirit of amateur golf.

47TH ILLINOIS SENIOR WOMEN'S AMATEUR GOLF CHAMPIONSHIP

Champaign Country Club • Champaign, Illinois

SEPTEMBER 13-15, 2016



Est. 1933

iwga.org

ELIGIBILITY

Entry is open to women amateur golfers who have reached their 50th birthday by the first day of play and have an established USGA 18-hole handicap index of 30 or less. The contestant must maintain a residence in Illinois, and her club must be a member of the IWGA or a player whose club is not a member of the IWGA may elect to become an individual member of the IWGA for \$15 (see iwga.org home page).

ENTRY DEADLINE

Entries will be accepted from the applicants with the lowest handicaps until August 15, 2016, or until the field of 120 players is full. The August 15 handicap index will be used to determine the final field and will be used for the tournament handicaps. All entries must be accompanied by a current handicap index card to assist the Board with determining the August 15 handicap index for each player. Confirmation of receipt of entry and payment will be posted at iwga.org as well as the final field and waiting list in the event of a full field. Players on the waiting list will be notified by phone and/or email if they are in position to fill an opening.

FORMAT

The championship will be determined by 54 holes of stroke play. Players will be flighted by age group with flights to be determined after the close of registration. The Champion will be the low gross winner across the field. Ties for overall Champion will be determined by sudden-death playoff. All other ties will be determined by scorecard playoff.

PRIZES

Prizes will be awarded to the 1st three low gross scorers across the field as well as the low net winner across the field. All other prizes shall be awarded within age flights. Contestants may win only one age group prize but may also be awarded overall prizes.

ENTRY FEE

The entry fee is \$225 and includes three tournament rounds with cart, Monday, Sept. 12 practice round (cart not included), banquet dinner at Champaign Country Club, club storage, prizes, and range balls on tournament days before play. Guests are welcome for the banquet dinner at a cost of \$35. Refunds for cancellations prior to August 31 will have a \$10 administrative fee deducted. No refunds will be given after August 31. Note: additional practice round dates are available. Call Pro Shop at (217) 356-1255 to schedule.

CONTESTANTS

All contestants are required to use a golf cart and will share the cart with a fellow contestant. Caddies are prohibited. Appropriate golf attire must be worn and soft spikes are mandatory. Electronic devices **that measure distance only** will be allowed.

REGISTRATION

All contestants are required to register in person or by phone at (217) 356-1255 on Monday, September 12 from 11am to 3pm.

QUESTIONS & WITHDRAWALS

Questions and withdrawals may be addressed to the Tournament Chairmen: Jane Piper (217) 778-3389 or Carla Sloan (217) 433-1787 or email to senior_am@iwga.org



2015 Champion
Jan Bowers
Lincoln

ENTRY FORM

2016 ILLINOIS SENIOR WOMEN'S AMATEUR CHAMPIONSHIP
Champaign CC, Champaign, Illinois

Mail Entry Fee of \$225.00 Payable To:
ILLINOIS WOMEN'S GOLF ASSOCIATION
Mary Robson, 225 Illini Drive, Galesburg, IL 61401
**** or register and pay on-line at iwga.org ****

I understand that USGA rules will govern play and that the IWGA will interpret and make all rules and entry decisions. Any decision of the IWGA shall be final. **I have attached my current handicap index card to assist the Board in looking up my August 15, 2016 handicap.**

Receive Texts ?

NAME: _____ (PLEASE PRINT) PHONE: _____ (CARRIER)
HOME ADDRESS: _____ CITY: _____ ZIP: _____
AGE AS OF SEPTEMBER 13, 2016: _____ E-MAIL ADDRESS: _____
CLUB: _____ CITY: _____ HANDICAP INDEX (send copy): _____

This form may be copied. Additional forms are available at iwga.org

HOTEL INFORMATION

Requests for motel reservations should be sent directly to the hotel concerned. Call by 8/11/16 and mention the IWGA for preferred rates. Prices do not include tax and are subject to change.

DRURY INN

905 W. Anthony Dr.
Champaign, IL 61821
(217) 398-0030
Double Room\$114.99
(Group Code 2264213)
(Breakfast Included)

HILTON GARDEN INN

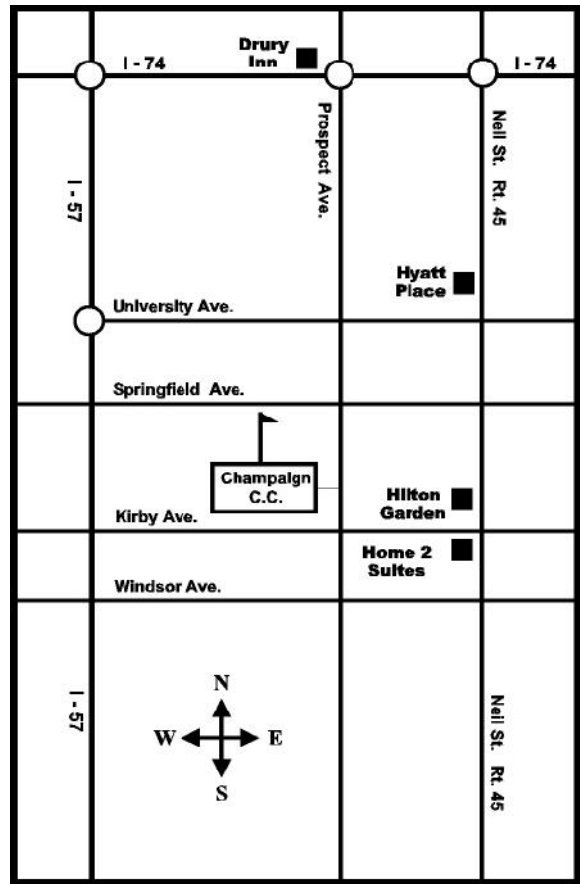
1501 S. Neil St.
Champaign, IL 61821
(217) 352-9970
Double Room\$121.00

HOME 2 SUITES BY HILTON

2013 S. Neil St.
Champaign, IL 61821
(217) 355-6468
Double Room\$139.00
(Breakfast Included)

HYATT PLACE

217 N. Neil St.
Champaign, IL 61821
(217) 531-3800
Double Room\$129.00
(Breakfast Included)



TOURNAMENT SCHEDULE

- | | | |
|------|----------|--|
| Mon. | Sept. 12 | Registration 11:00 am - 3:00 pm
Practice Round - Call Pro Shop to schedule |
| Tue. | Sept. 13 | 1 st round play – 9 am shotgun start |
| Wed. | Sept. 14 | 2nd round play – 9 am shotgun start
No host cocktails at 5:30 pm
Dinner at 6:30 pm at Champaign CC |
| Thu. | Sept. 15 | Final round play – 8:30 am shotgun start
Awards ceremony following play |

CHAMPAIGN COUNTRY CLUB

1211 S. Prospect Ave.
Champaign, IL 61821
217-356-1255
champaigncountryclub.com

Founded in 1933, the IWGA is an all-volunteer organization devoted to advancing golf opportunities for the women and girls of Illinois by conducting state championship tournaments and through fundraising to support charitable contributions to individuals and organizations that embody the spirit of amateur golf.